



British Study Centres  
School of English

# English UK | 2014

LONDON, OXFORD, BRIGHTON & BOURNEMOUTH



**Winner**

English Language School - Europe 2010 & 2012

BSC voted 'Star' English Language School in Europe in 2010 & 2012  
Finalist in 2009, 2011 & 2013



British Study Centres  
GROUP

# Award-winning English Schools



British Study Centres is an award-winning educational group with adult schools in four of the UK's most popular locations: London, Oxford, Brighton & Bournemouth.

Each of our schools has its own character and personality, and yet each follows the same BSC philosophy, offering high-quality courses and facilities at accessible prices.

At BSC we are committed to providing the very best in English language programmes.

Learning in English, living in English... thinking in English.

**Andrew Roper** Managing Director



BSC won two awards at the prestigious Study Travel Magazine ceremony 2012: the 'Star' English Language School Europe and 'Star' Junior Courses for under 18s! These awards recognise English language schools worldwide for their high standard of provision and are voted for by language professionals and agencies across the world.



**Winner**

English Language School – Europe 2010 & 2012  
Junior Course for under 18s 2012

### OXFORD

Monthly bus pass: £45  
Return train to London: £23.40 (50 mins approx)  
Entrance to Christchurch College: £5  
Pint of lager: £3

### LONDON

Monthly Travelcard (Zones 1-3): £136.80  
Coffee at Starbucks: £2.50  
Pint of lager in the West End: £3.95  
Fish & Chips in central London: £6.75



### BOURNEMOUTH

Monthly bus pass: £51  
Return train to London: £50 (2 hrs approx)  
One day trip to Isle of Wight: £25  
Pint of lager at the Town Square: £2.25  
Fish & Chips by the Pier: £4

### BRIGHTON

Monthly bus pass: £65  
Return train to London: £21.10 (1 hr approx)  
Entrance to the Royal Pavilion: £10



British Study Centres is committed to making a positive impact on our environment. This brochure has been printed using FSC certified paper from sustainable forests.



British Study Centres School of English Limited is a member of the British Study Centres group of colleges.



British Study Centres Schools of English are members of English UK and accredited by the British Council

# London

So much history, so much to do, so many landmarks – Buckingham Palace, Westminster Abbey, the London Eye – your stay will always be too short!



Join James, School Director at British Study Centres London, for a video tour of our building and facilities!

[www.british-study.com/videos.php](http://www.british-study.com/videos.php)



## Outstanding Location

Many of London's sights are within walking distance of our central London English language school, which is located in the heart of the city, close to Oxford Street and Baker Street. Bond Street and Baker Street underground stations are just 5 minutes walk from the school.

The school is 2 minutes walk from Marylebone High Street, which was recently voted the best High Street in London.

1. Exterior of our London school
2. Students in class
3. University-style library
4. Spacious internet zone
5. Students area

Opened in February 2004 and further extended in April 2010, British Study Centres London is housed on five floors and is equipped with the very best in language learning facilities.



## Bright Attractive Classrooms

Our school is housed on 5 floors and has 24 spacious, comfortable classrooms. At peak times we have the use of up to 33 classrooms at our main building, Hannah House, using classes from our Business School. We also provide up to 9 teaching rooms at our additional centre, the School of Economic Science, located 5 minutes on foot from our main building.



## Library & Study Centre

The school is equipped with a university-style library and a self-access centre which has a wide range of self-study material and exam practice books together with 14 computers which all have self-study programs. An experienced teacher is always there to help you with any questions you have about the books or your studies.



## Free Internet Zone

The computer area is fitted with 40 computers, many with headphones and webcams for an enhanced online experience, and offers free high-speed internet connection. Laptop users can also enjoy free Wi-Fi connection in the café and library.

Facilities are shared with our Business School, West London College, which provides career training to Bachelor's and Master's Degree level (Business Studies, Computer Training, Travel & Tourism and Fashion).



**In-House Café** The school benefits from its own 70-seater café with sofa area and wide-screen plasma TV, where students can relax, have lunch and socialise with friends during breaks and after lessons.



We are very proud of the number of nationalities we have entering our school each year. We taught more than 2,600 students from over 95 countries in 2013.

### Nationality Mix 2013

Italian	14%
French	10%
Spanish	8%
Swiss	7%
German	7%
Russian	7%
South Korean	5%
Brazilian	5%
Japanese	4%
Saudi Arabia	2%



### BSC London Key Facts

No. of students in peak season 450, low season 300

Average age of students: 25

School is centrally located, with Baker Street or Bond Street tube stations only minutes away

Large in-house café with free wireless connection

Specialist business course

Job Club (p. 26)



## Most Visited Attractions

- 01 British Museum
- 02 National Gallery
- 03 Tate Modern
- 04 Natural History Museum
- 05 The London Eye
- 06 Science Museum
- 07 The Tower of London
- 08 National Maritime Museum
- 09 Westminster Abbey
- 10 Madame Tussauds

**Did you know?** During 2009/10 the London Underground carried 1,065 million passengers – the fourth year in succession that the tube has carried more than one billion passengers.

### Discovering London

Some say London is the centre of the world! The city has so much history, heritage and culture and so much to see and do with world-famous landmarks such as Big Ben, Buckingham Palace and the London Eye. Enjoy London's nightlife, fine restaurants and the wide-open spaces of Europe's "greenest" city. Did you know that 30% of London is made up of parks and gardens? London also enjoys an eclectic mix of people and cultures making it a truly cosmopolitan city.

### Weekly Social Programme

The school runs an exciting weekly social programme. A typical month may include trips to the cinema, a boat party on the River Thames, a visit to the Houses of Parliament, a visit to the BBC studios or a picnic or sports afternoon in Regent's Park. In addition, weekend trips to places of interest, such as Bath and Stonehenge, Cambridge, Oxford and even Paris, Scotland or Amsterdam. A small charge (£3 – £15) is made for some activities, others are free of charge. Prices for full-day and weekend trips around the UK & Europe range from £30-£250.



1. The BA London Eye
2. Changing of the Guard
3. Students visiting Madame Tussauds
4. Typical year-round residence en-suite bedroom
5. Summer residence single room
6. Typical student house kitchen





## Accommodation Information

Some of our accommodation is booked via our experienced partner agencies, Perfect Homestay, UK Guests or All About Homestay.

All accommodation is inspected by our Accommodation Officers on a regular basis and is within reasonable & safe walking distance from a tube station.

The student house and summer residence accommodation options are only available for students who are over 18 years old.

### Useful Tips and Advice

We always try to place students on a direct Underground line to the school as this is the most important factor to consider when travelling in London. Baker Street station is 5 minutes walk from the school and is served by the Bakerloo, Jubilee, Hammersmith & City, Metropolitan and Circle lines.

Bond Street is 5 minutes walk from the school and is served by the Central and Jubilee lines.

The most cost efficient way to travel within London is to buy a weekly or monthly Travelcard. Please see the Transport for London website, [www.tfl.gov.uk](http://www.tfl.gov.uk) for up-to-date prices.

Students enrolled on a course of 14 weeks or more can save up to 30% by applying for a 18+ Student Oyster photocard. For further information please enquire at the school's reception on arrival.

	HOMESTAY	STUDENT HOUSE	YEAR-ROUND & SUMMER RESIDENCES
AVAILABILITY	All year-round		<p><b>YR</b> All year-round</p> <p><b>SR</b> In July &amp; August</p>
LOCATION	<p><b>S</b> The majority of our families are located in zones 3-4 and occasionally 5</p> <p><b>E</b> Zone 2. Areas include: Willesden Green, Westbourne Park and West Hampstead</p>	<p><b>S</b> The majority of our student houses are located in Zone 3. Areas include: Leyton, Leytonstone and Walthamstow</p> <p><b>+</b> Our superior student house is located in North West London in the lively Borough of Camden and provides easy access to central London.</p>	Both our year-round and summer residences are located in Zone 2, 30 minutes away from our school by public transport, and provide easy access to Central London and the school. All rooms are modern, with your own private bathroom and internet access. In addition, there are excellent shared common rooms and kitchen facilities.
AVERAGE JOURNEY TO SCHOOL BY PUBLIC TRANSPORT	<p><b>S</b> 45 minutes</p> <p><b>E</b> 25 minutes</p>	<p><b>S</b> 45 minutes</p> <p><b>+</b> 30 minutes</p>	<p><b>YR</b> Holloway Road 4 mins walk</p> <p><b>SR</b> Caledonian Road 5 mins walk</p>
BOOKING OPTIONS	<p><b>S</b> &amp; <b>E</b> Single room</p> <p><b>S</b> Shared room (only available to 2 students booking together)</p>	<p>Single room</p> <p>Shared room (only available to 2 students booking together)</p>	Single room, en-suite
MEAL PLANS	<p>Half board</p> <p>Breakfast only</p> <p><b>S</b> Self-catering</p>	Self-catering: kitchens are modern and equipped with cookers, cutlery, cooking utensils	
BATHROOM FACILITIES	<p><b>S</b> Shared</p> <p><b>E</b> Private bathroom</p>	<p><b>S</b> Shared. Typically student houses have two bathrooms</p> <p><b>+</b> En-suite</p>	All rooms are en-suite
INTERNET ACCESS	Internet access might be available in some homestays. Please check with us at the time of booking	Internet access is available	
OTHER INFORMATION		Only available to students who are over 18 years old	

# Oxford

The UK's number one student city! 40,000 students and 39 university colleges give Oxford a very special atmosphere – an ideal place to learn.



Join Niko, School Director at British Study Centres Oxford, for a video tour of our building and facilities!

[www.british-study.com/videos.php](http://www.british-study.com/videos.php)



## A City Made for Students

Oxford has a deserved worldwide reputation for the quality of its education. Oxford University is consistently ranked in the top three in the world. The city has a renowned literary heritage. JRR Tolkien, CS Lewis, Lewis Carroll and Philip Pullman are just a few of the famous writers to have been based in Oxford.

The city sits on the banks of the Thames and boasts a variety of world-famous museums, galleries and libraries. Besides the traditional, there are hundreds of modern restaurants, pubs, clubs and riverside cafes to enjoy. Oxford, with its population of 40,000+ students, is located in the heart of England and benefits from excellent road and rail links to London (50 minutes) and the rest of the UK.

1. Exterior of our Oxford school
2. School entrance
3. Study centre
4. Internet zone
5. School terrace

All 17 spacious classrooms benefit from natural light and some offer the latest advances in learning facilities, such as interactive whiteboards, which make lessons even more fun.



## Central Location

BSC Oxford is located in the very heart of the city, in the historic St.Giles district, less than 100 metres from the world-famous Ashmolean Museum and directly opposite part of Oxford University. Commarket, the popular bustling pedestrian street with its shops and cafés, is just 50 metres from our front door!



## Fully-Equipped Study Centre

The study centre offers a wide range of learning materials, which will help you achieve your goal of becoming fluent in the English language.



## Free Internet Zone and Wi-Fi Connection

The computer room is fitted with 20 modern wide-screen computers and offers free high-speed internet connection. Laptop users can also enjoy free Wi-Fi connection throughout the building.

In addition to a wide range of General English and exam preparation courses, our Teacher Training centre, based 5 minutes walk from our main building, caters for both UK and overseas teachers who wish to develop their teaching careers.





**A Warm Welcome!** Our state-of-the-art Oxford centre is fitted with the very best in language learning facilities, offering students a unique modern learning experience.



Classes are small and multinational, with an average of 11 students. This enables our teachers to focus on your individual aims and interests to help you improve your English in a way which is relevant to you.

### Nationality Mix 2013

French	13%
Italian	12%
Spanish	8%
Russian	5%
German	5%
Czech	4%
Turkish	4%
Saudi Arabian	4%
Japanese	4%
Swiss	4%

### BSC Oxford Key Facts

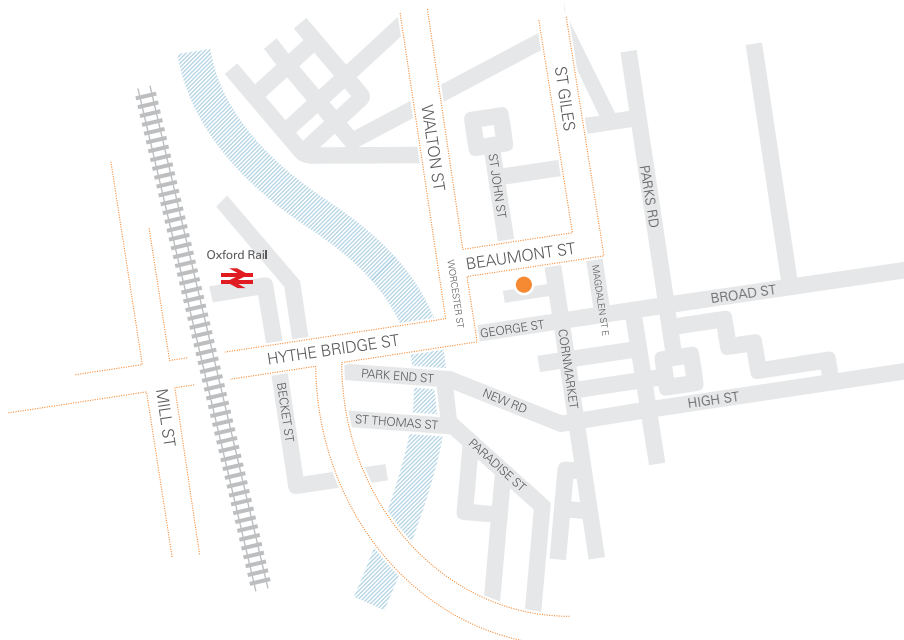
No. of students in peak season 325,  
 low season 175

Average age of students: 25

Centrally located school minutes  
 away from main bus & rail stations

Specialist Teacher Training Centre

Job Club (p. 26)





Oxford University is the oldest English speaking university in the world, dating back to 1249. It boasts 39 colleges including Christchurch College.

#### Seeing the City, Making Friends

This is a hugely important aspect of every student's stay with us. Our aim at BSC is to provide as many opportunities to meet other students as possible and get to know the city. Our weekly social programme is packed with cultural, sporting and leisure activities, including visits to a University college, film club, conversation club, theatre trip, greyhound racing, football, 'punting', museum visits and many, many more.

Monday	Tuesday	Wednesday	Thursday	Friday	Saturday	Sunday
28	29	Cream Tea £4.50	30 Magdalen College £3.50	31 Ashmolean Museum FREE	1 Trips around the UK & Europe	2 Trips around the UK & Europe
4	Oxford Walking Tour FREE	5 Punting £3-4	6 Christchurch College £4-4.50	7 Oxford Museum FREE	8 Trips around the UK & Europe	9 Trips around the UK & Europe
11	Oxford Walking Tour FREE	12 Cream Tea £4.50	13 Magdalen College £3.50	14 History of Science Museum FREE	15 Trips around the UK & Europe	16 Trips around the UK & Europe
18	Oxford Walking Tour FREE	19 Punting £3-4	20 Christchurch College £4-4.50	21 Bodleian Library FREE	22 Trips around the UK & Europe	23 Trips around the UK & Europe
25	Oxford Walking Tour FREE	26 Cream Tea £4.50	27 Magdalen College £3.50	28 Ashmolean Museum FREE	29 Trips around the UK & Europe	30 Trips around the UK & Europe

Sample Social Programme August 2013

A small charge (£3 – £15) is made for some activities, others are free of charge. Prices for full-day and weekend trips around the UK & Europe range from £30-£250

1. Oxford University
2. Punting on the river
3. Student house bedroom

4. Superior student house
5. Year-round residence typical kitchen



## Accommodation Information

All the accommodation is inspected by our Accommodation Officers on a regular basis and is within reasonable and safe walking distance from a bus stop.

The student house and summer residence accommodation options are only available for students who are over 18 years old.

Student houses have a 4 week minimum booking term.

We offer three different types of accommodation, according to your needs. All options offer safe, secure and friendly accommodation.

	HOMESTAY	STUDENT HOUSE <span style="color: blue;">+</span> , <span style="color: grey;">S</span>	YEAR-ROUND & SUMMER RESIDENCES
AVAILABILITY	All year-round		<span style="color: purple;">YR</span> All year-round <span style="color: green;">SR</span> In July & August
LOCATION	<span style="color: grey;">S</span> & <span style="color: orange;">E</span> All hosts are within reasonable and safe walking distance from a bus stop	All student houses are within walking distance from a bus stop or the school	<span style="color: purple;">YR</span> Cavalier House, our brand new year-round residence, is located 15-20 minutes away from the school by public transport. <span style="color: green;">SR</span> Slade Park, our summer residence, is situated approximately 3 kilometres from the school. The average journey time to/from school is 25 minutes by public transport.
AVERAGE JOURNEY TO SCHOOL BY PUBLIC TRANSPORT	<span style="color: grey;">S</span> 30-40 minutes <span style="color: orange;">E</span> 25 minutes	A short bus ride or 20 minutes on foot	<span style="color: purple;">YR</span> 20 minutes <span style="color: green;">SR</span> 35 minutes
BOOKING OPTIONS	<span style="color: grey;">S</span> & <span style="color: orange;">E</span> Single room <span style="color: grey;">S</span> Shared room (only available to 2 students booking together)	Single room	Single room, en-suite
MEAL PLANS	Half board Breakfast only <span style="color: grey;">S</span> Self-catering	Self-catering: kitchens are modern and equipped with cookers, cutlery, cooking utensils	
BATHROOM FACILITIES	<span style="color: grey;">S</span> Shared <span style="color: orange;">E</span> Private bathroom	Shared. Typically student houses have one or two bathrooms	All rooms are en-suite
INTERNET ACCESS	Internet access might be available in some homestays. Please check with us at the time of booking	Internet access is available	
OTHER INFORMATION		Only available to students who are over 18 years old	Only available to students who are over 18 years old

S Standard   E Executive   + Superior   YR Year-round Residence   SR Summer Residence

# Brighton

If you like the outdoor life, walking on the beach, sitting on a café terrace and exploring designer shops, then Brighton & Hove is the place for you...



Join John, School Director at British Study Centres Brighton, for a video tour of our building and facilities!

[www.british-study.com/videos.php](http://www.british-study.com/videos.php)



## Britain's Youngest City

Britain's newest city and famous seaside resort has two universities and reputedly the youngest population in the UK. Granted 'city' status in 2001, and often known as 'London-by-the-sea', it offers the buzz of a large cosmopolitan centre in a relaxing seaside setting. There is much to explore: the famous pier with its fairground attractions, the Marina with its waterside cafés, bars & health clubs and the Sea Life Centre. Of course, you can always just sit on the beach... Brighton & Hove is on the south coast of England, approximately 80km south of London. There is a regular and direct train service to London which takes just 49 minutes.

## Ideal Location

Close to Hove train station and with easy access to the city centre, our school's ideal location will allow you to take advantage of all the attractions of the city centre and the beach, which is about 15 minutes away.

1. Exterior of our Brighton school
2. Students in class
3. Well-equipped study centre
4. In-house café
5. Students in the garden
6. Free Wi-Fi connection
7. Spacious garden

We are located side-by-side with our sister school, Hove College, which offers specialist diploma courses in Web and Graphic Design. These courses can be combined with our General English programmes for students wishing to embark on career training.



## Spacious Classrooms

The school has 15 spacious classrooms, spread over 2 buildings, all with high windows and natural light, most of them with views of our fantastic garden.



## Study Centre

The school benefits from its own study centre, fully-equipped with all the resources you might need to boost your learning progress: books, dictionaries, audio materials, past exam papers and much more.



## In-House Café

The school boasts its own café where students can have a meal and socialise during breaks and after lessons. The food is freshly made in-house and provides a good value for money lunch option.



5



6



7

### Nationality Mix 2013

Italian	15%
French	12%
Swiss	11%
Spanish	9%
German	7%
Japanese	5%
Czech	5%
Brazilian	4%
Turkish	4%
Russian	4%

### BSC Brighton Key Facts

No. of students in peak season 350,  
 low season 150

Average age of students: 25

Large café & spacious garden

General English Plus Windsurfing or  
 Cooking course (p. 26)

Student Houses are within walking  
 distance of the school

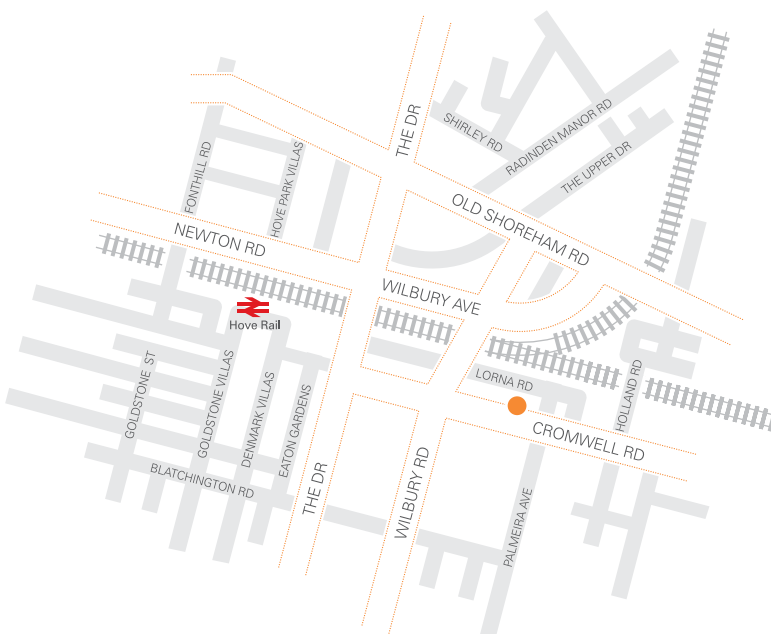
Job Club (p. 26)

#### Free Internet Zone & Wi-Fi Connection

The computer room fitted with modern terminals will let you keep in touch with family and friends. In addition, Wi-Fi connection is available throughout the building.

#### Spacious Garden

We are lucky to have our own garden and terrace, which is an ideal place to host barbecue parties in the warm summer months and socialise with classmates and friends after lessons.





## Brighton was recently voted "UK's Coolest City"

### BSC Brighton Supporting Comic Relief

Throughout the year our schools participate in many fundraising events to support charities such as Cancer Research, Save the Children and Amnesty International. Last year BSC helped those charities raise over £2000!

Staff and students at BSC Brighton managed to raise more than £550 towards Comic Relief Charity on Red Nose Day last year.

In addition, British Study Centres has a chosen charity: The Hotcourses Foundation which supports children in Africa that have a limited access to education. BSC is trying to help by making annual donations to the Foundation.

### Action-Packed Social Programme

Our weekly social programme offers a fantastic range of events! Brighton is the perfect place to enjoy the best of British sun and seaside. From volleyball on the beach beside Brighton's famous pier to barbecues in the back garden of the school's premises, our students and staff wouldn't be anywhere else.

A small charge (£3 – £15) is made for some activities, others are free of charge. Prices for full-day and weekend trips around the UK & Europe range from £30-£250.



1. Red Nose Day charity event
2. Making friends
3. Barbecue in the garden
4. The Royal Pavilion,  
courtesy of [brighton-net.com](http://brighton-net.com)

5. Summer residence kitchen
6. Typical student house kitchen
7. Free Wi-Fi in student houses



## Accommodation Information

All the accommodation provided is within reasonable and safe walking distance from a bus stop directly connected to the school.

All the accommodation is regularly inspected by our Accommodation Officers.

The student house and summer residence accommodation options are only available for students who are over 18 years old.

We want you to feel at home in the UK – and we have a good range of accommodation options for you to choose from to suit your needs and budget.

	HOMESTAY	STUDENT HOUSE	SUMMER RESIDENCE
<b>AVAILABILITY</b>	All year-round		In July & August
<b>LOCATION</b>	Ⓢ & ⓔ Most homestays are a bus ride away	All our student houses are conveniently located within walking distance of the school. There is a large supermarket and plenty of convenience stores, restaurants and cafés in the nearby area	Phoenix Halls are located in the centre of Brighton just half a mile north of the famous Brighton pier. The residence is easily accessible by bus and on foot
<b>AVERAGE JOURNEY TO SCHOOL BY PUBLIC TRANSPORT</b>	Ⓢ & ⓔ 40 minutes	15-20 minutes on foot	30 minutes
<b>BOOKING OPTIONS</b>	Ⓢ & ⓔ Single room Ⓢ Shared room (only available to 2 students booking together)	Single room	Single room, en-suite
<b>MEAL PLANS</b>	Half board Breakfast only Ⓢ Self-catering	Self-catering: kitchens are modern and equipped with cookers, cutlery, cooking utensils	
<b>BATHROOM FACILITIES</b>	Ⓢ Shared ⓔ Private bathroom	Shared. Typically student houses have two bathrooms	All rooms are en-suite
<b>INTERNET ACCESS</b>	Internet access might be available in some homestays. Please check with us at the time of booking	Internet access is available	
<b>OTHER INFORMATION</b>		A £150 deposit is required to cover possible loss or damage to the contents and/or property  Only available to students who are over 18 years old	Only available to students who are over 18 years old

Ⓢ Standard   ⓔ Executive

# Bournemouth

Bournemouth, on the UK's sunshine coast, invites you to study in Britain's happiest town!



Join Roland, School Director at British Study Centres Bournemouth, for a tour of our building and facilities!

[www.british-study.com/bournemouth-tour.php](http://www.british-study.com/bournemouth-tour.php)



## Study in Bournemouth, the UK's Happiest Town!

Our newest English school is conveniently situated in the very centre of Bournemouth, so our students literally have all the shops, pubs and clubs on their doorstep. Just a 2-minute walk from the Lower Gardens and a 5-minute walk from the beach and pier, there is no location more central to Bournemouth than this!

Bournemouth has a cosmopolitan population and is home to Bournemouth University, the UK's number 1 new university according to the Guardian University Guide 2009 & 2010. Small wonder that Bournemouth has time and again been voted the UK's happiest town!

1. Exterior of our Bournemouth school
2. School interior
3. School reception
4. Study centre & internet area
5. School Juice Bar

With 11km of award winning sandy beaches, a warmer than average climate and a daily average of 7.7 hours of summer sun, why not come and enjoy Britain's holiday-making paradise?



## Great Learning Experience

Our strength is in our first-class facilities and enthusiastic team who are dedicated in providing a great learning environment. In conjunction with our modern glass fronted classrooms, warm wooden flooring and open airy spaces which give a sleek finish, we hope your experience with us is truly magical.

## Excellent Facilities

Spread over an entire floor of a landmark Art Deco building, our newly refurbished school features 12 spacious classrooms, a study centre, Juice Bar, internet zone, free Wi-Fi connection and free student showers and lockers. At certain times of the year, facilities are shared with our junior school.

## Bright Study Centre & Internet Area

The study centre is fitted with 8 modern flat-screen computers and offers free high-speed internet connection. Laptop users can also enjoy free Wi-Fi connection throughout the building





### Juice Bar

The school has its own Juice Bar which is the perfect place for lunch or for meeting your friends during break or after class. Breakfast, lunch and snacks are on offer at very accessible prices. Students say we have the best coffee in town!

### Getting There

Bournemouth benefits from excellent transport links and can be reached by rail, road, sea and air! The fast train link to London from Bournemouth station means the capital can be reached within 2 hours and a National Express coach service operates between the London airports and Bournemouth.

Students can fly to Bournemouth International Airport or Southampton Airport which is only 45 minutes from Bournemouth. Germany, Switzerland, France, Spain and Italy all benefit from direct flights into Bournemouth and Southampton.

### Nationality Mix 2013

Venezuelan	15%
Italian	14%
Spanish	12%
Saudi Arabian	9%
French	6%
German	4%
Czech	3%
Turkish	3%
Swiss	3%
Russian	3%

### BSC Bournemouth Key Facts

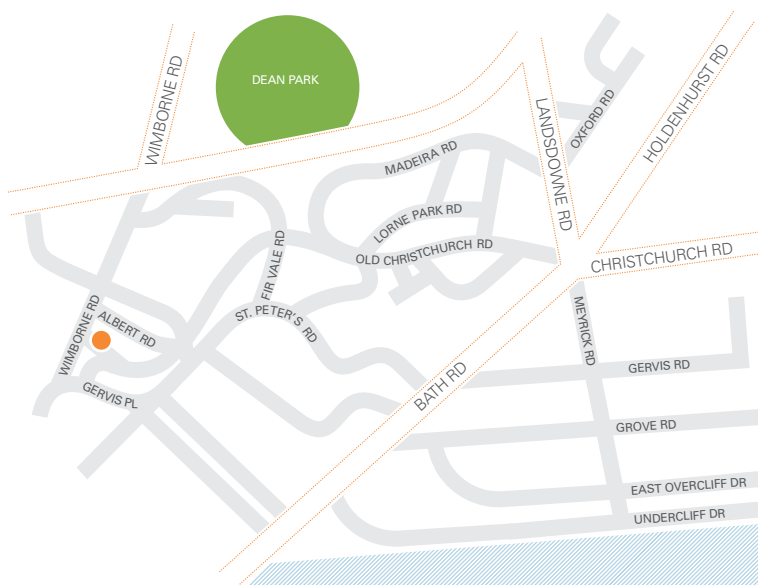
No. of students in peak season 150,  
low season 45

Average age of students: 23

Our school is just a 5 minute walk  
from the beach

Year-round residence

Job Club (p. 26)





The Dorset Coast was recently awarded “World Heritage” status, putting it on par with the Great Barrier Reef and the Grand Canyon.



#### Games on the Golden Beach

The school runs an exciting weekly social programme. A typical month may include an evening BBQ and games on the beach, cycling, a boat cruise around Poole Harbour and weekend trips to Winchester, Stonehenge, Oxford and London. A small charge (£3 – £15) is made for some activities, others are free of charge. Prices for full-day and weekend trips around the UK & Europe range from £30-£250.

#### Green and Pleasant

The town is renowned for its award-winning gardens and parks. From the Tropical Gardens in Boscombe and Alum Chine to the Grade II listed Victorian Lower and Upper Gardens, Bournemouth has a wealth of green open spaces for students to enjoy.

#### Lively Nights

Overlooking the beach and pier, the Bournemouth International Centre offers the latest concerts, shows, plays and ice-skating. Famous for its lively nightlife, the town has the highest number of bars and clubs per capita in the UK after London!



1. On the beach
2. Students enjoying the outside space
3. Football on the beach
4. Jurassic Coast tour
5. The Bournemouth Eye
6. Student house kitchen
7. Summer residence kitchen
8. Typical homestay



## Accommodation Information

All the accommodation is inspected by our Accommodation Officers on a regular basis and is within reasonable and safe walking distance from a bus stop.

The student house and summer residence accommodation options are only available for students who are over 18 years old.

The most cost effective way to travel within Bournemouth is to buy a monthly bus pass available from any newsagent for £51.

### Homestay

Living in a homestay can be one of the most rewarding parts of the student's visit to England. You will have the chance to live in a home environment and experience the culture first hand.

### Student House

Available all year-round, student houses are a fantastic accommodation choice for students who wish to be more independent. This newly built apartment block is reserved exclusively for British Study Centres students and has 10 flats, sleeping up to 24 students in total.

### Superior Summer Residence

At our Bournemouth summer residence we provide en-suite self-catering accommodation in July and August.

	HOMESTAY	STUDENT HOUSE	SUPERIOR SUMMER RESIDENCE
<b>AVAILABILITY</b>	All year-round		July & August
<b>LOCATION</b>	Ⓢ & ⓔ Most homestays are a bus ride away	The house is located 5 minutes from Winton high street and 5-10 minutes from the popular student area of Charminster. Both Winton and Charminster are packed with restaurants, coffee shops and convenience stores.	Purbeck House Residence is ideally located in the centre of Bournemouth just a 15 minute walk from the school and the beach.
<b>AVERAGE JOURNEY TO SCHOOL BY PUBLIC TRANSPORT</b>	Ⓢ & ⓔ 30 minutes	20-30 minutes on foot	15-20 minutes by public transport
<b>BOOKING OPTIONS</b>	Ⓢ & ⓔ Single room Ⓢ Shared room (only available to 2 students booking together)	Single room	Single room, en-suite
<b>MEAL PLANS</b>	Half board Breakfast only Ⓢ Self-catering	Self-catering: kitchens are modern and equipped with cookers, cutlery, cooking utensils	
<b>BATHROOM FACILITIES</b>	Ⓢ Shared ⓔ Private bathroom	Shared. Typically student houses have two bathrooms	All rooms are en-suite
<b>INTERNET ACCESS</b>	Internet access might be available in some homestays. Please check with us at the time of booking	Internet access is available	
<b>OTHER INFORMATION</b>		A £150 deposit is required to cover possible loss or damage to the contents and/or property. Only available to students who are over 18 years old	

# Choice of Courses

We offer a broad range of courses that have been carefully designed to cater for all needs and budgets.



## All Courses Include

Coursebook

BSC e-Learning account (p26)

First-day placement test

Use of study centre

Free internet access

Progress report (for students studying 8 weeks or more)

Help and advice with further study

Daily homework tasks corrected by your teacher

End of course report

British Study Centres Leaving Certificate showing your final level and attendance record (min. 85%)

1. London school library
2. General English class
3. Friendly teachers



## General English

We offer an exciting range of General English courses for all levels, from elementary to advanced, and for all budgets. Course intensity varies from 15 to 30 lessons per week to give you the opportunity to choose a course that perfectly suits your learning needs and daily routine. Each of our group lessons lasts 50 minutes.

## Exam Preparation Courses

Whether you are required to take an IELTS, TOEIC or TOEFL exam to enter a university or wish to study towards obtaining the FCE or CAE Cambridge certificate, we can provide the right exam preparation course for you.

## General English Plus Business English

This practical course is designed to widen your knowledge of specific vocabulary in a work context and business situations. It comprises 15 or 20 lessons of General English and 5 or 10 lessons per week of specialised Business English.

## General English Plus Cooking

Students who are passionate about cooking can now take advantage of this unique course and combine morning English classes with afternoon or evening cooking lessons at a local food and kitchen shop in Brighton or London.

## General English Plus Windsurfing

This course is available at BSC Brighton in August and combines morning English lessons with windsurfing in the afternoon.

## Work Experience and Career Services

Specialist programmes and advice for those wishing to further develop their career: internships, business courses and free job seeking guidance.

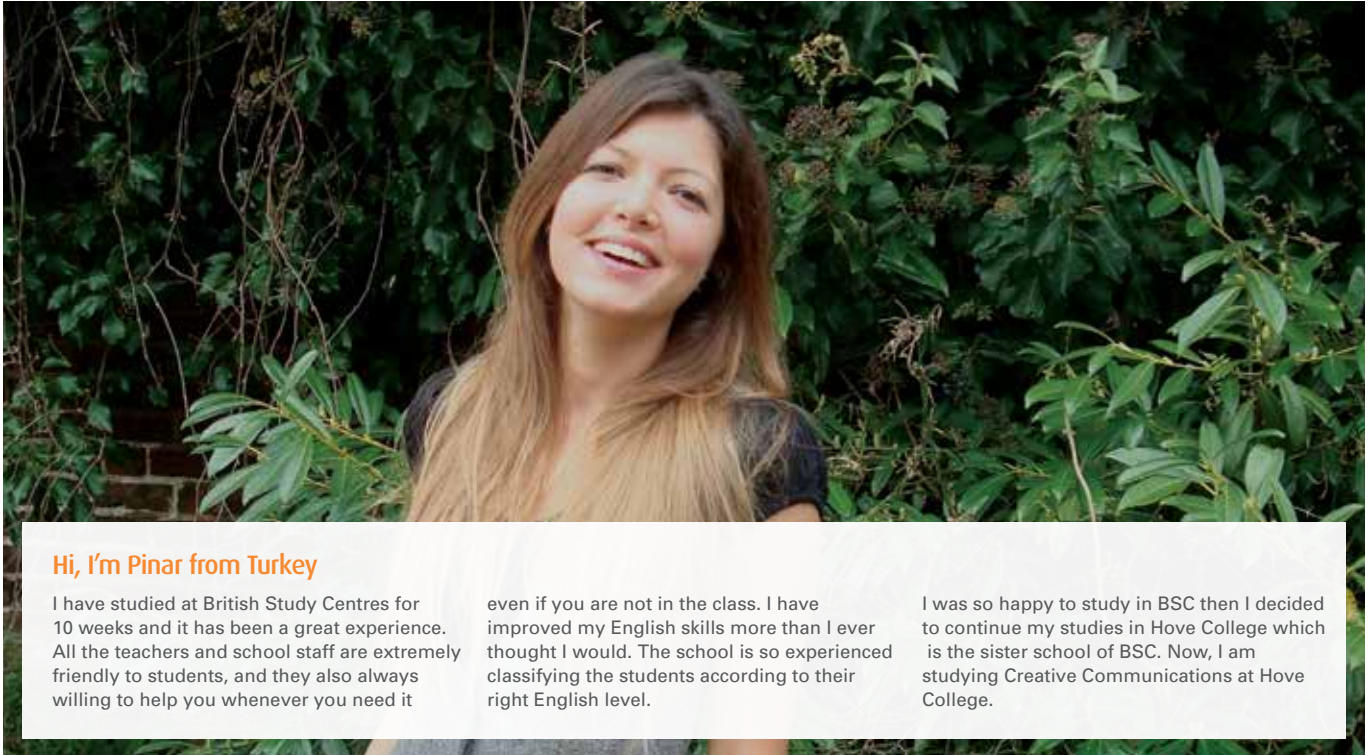
## One-to-One

Private tailor-made courses are designed to suit students' personal learning needs and daily routines.

Individual lessons are all 60 minutes long and the content can be negotiated between student and teacher. This gives you an opportunity to work on areas that are of particular interest or concern. The Academic Director timetables the individual classes and the times may vary each week, but they are usually in the afternoons.

## Specialist Courses

The BSC Academic Team has a wealth of experience and expertise in designing and delivering courses specific to the needs of diverse groups.



### Hi, I'm Pinar from Turkey

I have studied at British Study Centres for 10 weeks and it has been a great experience. All the teachers and school staff are extremely friendly to students, and they also always willing to help you whenever you need it

even if you are not in the class. I have improved my English skills more than I ever thought I would. The school is so experienced classifying the students according to their right English level.

I was so happy to study in BSC then I decided to continue my studies in Hove College which is the sister school of BSC. Now, I am studying Creative Communications at Hove College.



### Small Groups

Classes are small and multinational, with an average of 11 students and a maximum of 14. This enables our teachers to focus on your individual aims and interests to help you improve your English in a way which is relevant to you.

### Nationality Mix

We are really proud to have students from over 80 countries at our schools! This is a great opportunity to get to know people from different cultures and make your stay at British Study Centres a truly unforgettable experience!

### Communicative Approach

We use an innovative, communicative approach to teaching. Lessons are fun and interactive with a high level of student involvement focussing on the ability to communicate successfully in English. As well as using stimulating and contemporary materials, we employ a variety of different methodologies and technologies. We make the most of being in an English environment using class trips and external resources as much as possible to provide a personalised, authentic language learning experience. We believe that a warm and friendly environment is essential for effective learning and our commitment to high standards of achievement ensures that your time at the school is a rewarding experience.

**Centrally located premises, first-class learning facilities, advanced teaching methodology, talented teachers and multi-cultural environment – these are just some of the advantages of choosing our award-winning schools.**

### Individual Assessment

You will be individually assessed both on arrival and throughout the course. We give you a written and oral test on your first day and monitor your progress regularly. If you have achieved satisfactory attendance (85%+), you receive a certificate and a report signed by Academic Management at the end of your stay. These are very useful tools to show employers when looking for a new job.

### High-Quality Teaching

We keep our teaching team up-to-date with the latest ideas in EFL teaching in a number of ways. We have staff meetings every week and training sessions (every other Friday afternoon) when we introduce new ideas and techniques as well as discuss the particular needs of students who might be having problems, and plan for the future. We believe that these regular meetings are essential in order for us to provide a high level of professionalism and care for students.

# General English

We provide our students with a number of comprehensive options in General English courses.



General English forms the core of our teaching programme. Morning classes are based around a coursebook lesson, followed by a Speaking & Listening class.

## Summary

Start dates: every Monday

Course levels: Elementary to Advanced (A2 to C1)

Average class size: 11 (max 14)

Minimum course length: 2 weeks

Minimum age: 16 years

Group lesson duration: 50 minutes

### Coursebook

We work with a coursebook during the first 3 lessons of the day from 9:15 to 12:05, Monday to Friday, concentrating on the four main skills - speaking, listening, reading and writing. As well as these four main skills we will also work on other key areas to help develop your fluency and accuracy - pronunciation, grammar, vocabulary, idioms.

### Speaking & Listening

Speaking & Listening lessons are an extra opportunity for fluency practice. Sessions are designed to help students improve their spoken English and gain confidence for day-to-day communication. Lessons typically include role play, listening and group discussions.

Afternoon and intensive courses offer you the chance to focus on specific language areas and may include the following options depending on your learning needs and preferences.

### Grammar & Writing

This course is aimed at introducing and reinforcing grammatical structures and writing strategies, including style and register. The main focus for both elements is on accuracy. The aim of the course is to raise awareness, build confidence and give practice.

### Wordpower

A vocabulary-based course with a strong focus on the accurate production of the language in terms of meaning, form and pronunciation. The course is designed to build learners' confidence through contextualised practice. Areas covered may include: idioms, compounds, colloquialisms/slang, phrasal verbs, word-building, recording vocabulary, dictionary skills, easily confused words, metaphor, synonyms/antonyms, and prepositions.

### IELTS

This course is designed to prepare you for the IELTS (International English Language Testing System) examination, the ideal test if you need to study or work where English is the language of communication. IELTS scores are recognised by universities and colleges, employers, immigration authorities and professional bodies. All the sections of the exam (reading, writing, listening and speaking) are covered in this course. We also aim to broaden cultural horizons by exposure to a range of authentic and topical materials.

## Morning General English

Ideal for those students wishing to have more spare time in the afternoon to join in the social activities programme and to discover life in the UK.

**Course code:** G20am

**Lessons per week:** 20 (16.6 hours)

**Timetable:** Mon – Fri, 9:15 – 12:05: Coursebook  
12:25 – 13:10: Speaking & Listening

**Available in all centres**

## Intensive General English

Choose 25 or 30 lessons per week if you aim to improve your confidence in the English language as quickly as possible.

**Course code:** G25

**Lessons per week:** 25 (20.8 hours)

**Timetable:** Mon – Fri, 9:15 – 12:05: Coursebook  
Mon – Fri, 12:25 – 13:10: Speaking & Listening

14:15 – 16:35, 2 afternoons per week:  
Grammar & Writing or Wordpower or IELTS

**Available in all centres**

**Course code:** G30

**Lessons per week:** 30 (25 hours)

**Timetable:** Mon – Fri, 9:15 – 12:05: Coursebook  
Mon – Fri, 12:25 – 13:10: Speaking & Listening

14:15 – 16:35, 4 afternoons per week:  
Grammar & Writing or Wordpower or IELTS

## Afternoon General English

15- or 20-lesson per week courses designed for students who are looking for a high-quality full-time afternoon course.

**Course code:** G15pm

**Lessons per week:** 15 (12.5 hours)

**Timetable:** Mon – Fri, 12:25 – 13:10:  
Speaking & Listening

14:15 – 16:35, 4 afternoons per week:  
Grammar & Writing, Wordpower or IELTS

**Available in all centres**

**N.B:** Not available for visa national students.

**Course code:** G20pm

**Lessons per week:** 20 (16.6 hours)

**Timetable:** Mon – Thu, 13:15 – 17:00: Specialist  
afternoon grammar coursebook

17:10 – 18:00, 4 afternoons per week:  
Speaking & Listening

**Available in Bournemouth year-round  
Oxford, Brighton & London 30 Jun - 29 Aug**

	09:15	12:05	12:25	13:10	LUNCH	14:15	16:35	17:10	18:00
<b>MORNING G20am</b> 20 lessons p/w (16.6 hrs)	15 lessons Mon-Fri <b>CB</b>		5 lessons Mon-Fri <b>SL</b>		LUNCH 13:10 - 14:15				
<b>INTENSIVE G25</b> 25 lessons p/w (20.8 hrs)	15 lessons Mon-Fri <b>CB</b>		5 lessons Mon-Fri <b>SL</b>			5 lessons p/w Mon & Tue or Wed & Thu <b>WP</b> or <b>GW</b> or <b>IE</b>			
<b>INTENSIVE PLUS G30</b> 30 lessons p/w (25 hrs)	15 lessons Mon-Fri <b>CB</b>		5 lessons Mon-Fri <b>SL</b>			10 lessons p/w Mon-Thu choice of two: <b>WP</b> <b>GW</b> <b>IE</b>			
<b>AFTERNOON G15pm</b> 15 lessons p/w (12.5 hrs)			5 lessons Mon-Fri <b>SL</b>			10 lessons p/w Mon-Thu <b>WP</b> & <b>GW</b>			
<b>AFTERNOON PLUS G20pm</b> 20 lessons p/w (16.6 hrs)						15 lessons Mon-Thu <b>CB</b>			5 lessons Mon-Thu <b>SL</b>

**CB** Coursebook all levels

**SL** Speaking & Listening all levels

**WP** Wordpower

**GW** Grammar & Writing

**IE** IELTS (BSC London & Brighton)

# Exam Preparation Courses

Whether you are required to take an IELTS, TOEIC or TOEFL exam to enter a university or wish to study towards obtaining the FCE or CAE Cambridge qualification, we can provide the right exam preparation course for you.

## Course Summary

<b>Course Code</b>	IE20, IE25, IE30
<b>Available in</b>	All centres
<b>Start Dates</b>	Any Monday
<b>Min. Level</b>	Upper-Intermediate (B2)
<b>Class Size</b>	Average 11, maximum 14
<b>Lessons/Week</b>	20, 25, 30
<b>Lesson Duration</b>	50 minutes
<b>Exam Fee</b>	Approx. £160 (not inc.)

## IELTS Preparation

IELTS (International English Language Testing System) is an increasingly popular exam taken by students who plan to study at university in the UK, either for a first degree or a Master's. We offer a bespoke course which helps you prepare for the exam.

### Course Description

15 lessons of specialist IELTS preparation plus 5, 10 or 15 lessons per week of the following afternoon options: Speaking & Listening, Grammar & Writing, Wordpower and/or Business English.

### Contents & Timetable

**09:15-12:05, Mon - Fri:** During the first three lessons of the day the work done in class is based around a specialist IELTS coursebook and supplementary material is also used, particularly from authentic sources such as newspapers. The syllabus includes a range of topics which are relevant to the test. On this course you will study the four skills - reading, writing, speaking and listening - as they relate to the academic IELTS test, as well as specific task types necessary to do well in the test.

**Afternoon Lessons:** Options can be added to the IELTS course, too: many students take extra Speaking & Listening, Grammar & Writing, Wordpower and/or Business English lessons.

## Course Summary

<b>Course Code</b>	FCE, CAE
<b>Min. Level</b>	FCE: Upper-Intermediate (B2) CAE: Pre-Advanced (C1)
<b>Class Size</b>	Average 11, maximum 14
<b>Lessons/Week</b>	20, 25
<b>Lesson Duration</b>	50 minutes
<b>Exam Fee</b>	Approx. £140 (not inc.)

## Cambridge Exam Preparation Courses

The world-famous University of Cambridge exams are offered at both First Certificate and Advanced level. Courses start five times per year - in January, March, July and September and last for 10 to 12 weeks.

In addition, we offer an intensive 4-week, 25 lessons per week FCE/CAE Exam preparation course (FCE4), (CAE4). The start dates for 2013 are as follows:

### LONDON:

FCE & CAE start dates: 6 Jan (10 weeks), 17 Mar (13 weeks), 30 Jun & 28 July (4 weeks) and 15 Sep (12 weeks)

### OXFORD

FCE & CAE start dates: 17 Mar (12 weeks), 28 July (4 weeks) and 15 Sep (FCE 12 weeks, CAE 11 weeks)

### BRIGHTON

FCE & CAE start dates: 6 Jan (10 weeks), 17 Mar (FCE 12 weeks, CAE 13 weeks), 30 Jun & 28 July (4 weeks) and 15 Sep (12 weeks)

### BOURNEMOUTH

FCE start date: 28 July (4 weeks)

Please note that some parts of the exam may be taken before the end of the course.



## Course Summary

<b>Course Code</b>	TOEFL22/TOEIC22
<b>Start Dates</b>	Any Monday, Sep-Jun, London & Oxford  Any Monday, year-round Brighton & Bournemouth
<b>Min. Level</b>	Intermediate (B1)
<b>Class Size</b>	Average 11, maximum 14
<b>Lessons/Week</b>	20 group + 2 one-to-one
<b>Lesson Duration</b>	Group: 50 minutes One-to-one: 60 minutes
<b>Exam Fee</b>	TOEFL approx. £125 TOEIC approx. £90 (not inc.)

## General English Plus One-to-One TOEFL or TOEIC Preparation

Our TOEIC & TOEFL courses have weekly start dates and are designed to focus on perfecting your examination skills.

### Course Description

Our General English plus TOEIC or TOEFL courses also have weekly start dates and include a combination of 20 lessons of General English and 2 private lessons per week in which you can focus on perfecting your examination skills.

### Contents & Timetable

**09:15-12:05, Mon - Fri:** In the morning this course follows the same pattern as the Morning General English course and we work with a coursebook concentrating on the four main skills - speaking, listening, reading and writing.

The 5 afternoon group lessons are one of the three following options: Speaking & Listening, Grammar & Writing or Business English.

One-to-one lessons: the 2 one-to-one lessons usually take place in the afternoon.  
Individual lessons all last 60 minutes.

## Course Summary

<b>Course Code</b>	TOEFL25/TOEIC25
<b>Available in</b>	London & Oxford
<b>Start Dates</b>	Any Monday, Jul & Aug
<b>Min. Level</b>	Intermediate (B1)
<b>Class Size</b>	Group: Average 11, max.14 Mini-group: max 6
<b>Lessons/Week</b>	20 group + 5 mini group
<b>Lesson Duration</b>	Group: 50 minutes
<b>Exam Fee</b>	TOEFL approx. £125 TOEIC approx. £90 (not inc.)

## General English Plus TOEFL or TOEIC Summer Preparation in Mini-Groups

### Course Description

In summer the course comprises 20 lessons of General English plus 5 lessons of TOEIC or TOEFL Preparation in mini-groups (max. 6 students).

### Contents & Timetable

**09:15 – 12:05, Mon – Fri:** In the morning this course follows the same pattern as the General English Plus One-to-One TOEFL or TOEIC Preparation (see above).

The 5 afternoon group lessons comprise one of the three following options:  
Speaking & Listening, Grammar & Writing or Business English.

The 5 mini-group lessons take place on two afternoons and are designed to focus on exam practice techniques.

## The Common European Framework of Reference

This internationally recognised framework describes language ability on a scale of levels which ranges from A1 for beginners to C2 for those who have mastered a language. The table below demonstrates the correlation between CEFR, levels taught at British Study Centres and benchmark scores obtained in Cambridge, IELTS, TOEFL and TOEIC exams.

Please note: All level comparisons between exams are approximate. Students wishing to study on an exam course need to take a pre-test – please contact individual schools for details.

CEFR	BSC Levels	Cambridge	IELTS	TOEFL Paper/Computer/IBT	TOEIC
<b>MASTERY C2</b>		Certificate of Proficiency in English (CPE)	9.0	677/300/120	900
			8.0	600/250/100	800
<b>EFFECTIVE OPERATIONAL PROFICIENCY C1</b>	Advanced	Certificate in Advanced English (CAE)	7.0	550/213/80	700
<b>VANTAGE B2</b>	Upper-Intermediate	First Certificate in English (FCE)	6.0	500/173/61	600
			5.0	450/133/45	450
<b>THRESHOLD B1</b>	Intermediate	Preliminary English Test (PET)	4.0		
<b>WAYSTAGE A2/B1</b>	Pre-Intermediate	Key English Test (KET)			
<b>BREAKTHROUGH A2</b>	Elementary				

Courses for A1 Beginners are not available at BSC

# Specialist Courses

These courses are designed for those students wishing to enrol in a more specialist programme or to include activities in the afternoon.

## Course Summary

Course Code	B20*, B25, B30
Available in	London, Oxford & Brighton
Start Dates	Any Monday
Min. Level	Intermediate (B1)
Class Size	Average 11, maximum 14
Lessons/Week	20*, 25 or 30
Lesson Duration	50 minutes
BULATS Exam Fee	£45 (not inc.)

\* Excluding London



## General English Plus Business English

This practical course is designed to widen your knowledge of specific vocabulary in a work context and business situations. Our four schools are official agents and test centres for students who wish to take the BULATS (Business Language Testing Service) exam. The BULATS exam is an online test involving reading, use of English, and listening, and is a very useful certificate for students who wish to extend their visa and need to show proof of having taken an exam.

### Course Contents

This course comprises of 15, 20, or 25 lessons of General English and 10 (London) or 5 (Oxford & Brighton) lessons per week of specialised Business English in the afternoon.

### Contents & Timetable

**09:15-12:05, Mon - Fri:** In the morning this course follows the same pattern as the Morning General English course and we work with a coursebook concentrating on the four main skills - speaking, listening, reading and writing.

**12:25-13:15, Mon - Fri:** Students who wish to join a more intensive programme can attend the Speaking & Listening lessons for an extra opportunity for fluency practice.

**14:15-16:35, Mon - Thu, four (London) or two (Oxford & Brighton) afternoons a week:**

Specialised Business English where we cover all the skills, but focus more on speaking and listening. Emphasis is placed on communication tasks which give you the opportunity to practise fluency and build confidence in business situations.

Advice and assistance is available for students wishing to take the BULATS examination. Please see the Academic Director for more details.



## General English Plus Cooking

Students who are passionate about cooking can now take advantage of this unique course and combine morning English classes with afternoon or evening cooking lessons at a local food and kitchen shop in Brighton or London.

This course aims to help the novice cook become more confident at preparing a meal and also to inspire the competent cook when creating a dish. The emphasis is to empower cooks of every level and provide an extra opportunity to practise English.

### Course Contents

**09:15-12:05, Mon-Fri:** We work with a coursebook during the first three lessons of the day enabling you to improve the four main skills - speaking, listening, reading and writing. As well as these four main skills we will also work on other key areas to help develop your fluency and accuracy - pronunciation, grammar, vocabulary, idioms.

**12:25-13:15, Mon-Fri:** The final lesson of the course is devoted to Speaking & Listening, which is an extra opportunity for fluency practice.

**3 afternoon or evening cooking sessions per week (2 hours each):** Cookery lessons will take place at a local food and kitchen shop where anyone can learn to cook and make great food. This course aims to help the novice cook become more confident at preparing a meal and also to inspire the competent cook when creating a dish. The emphasis is to empower cooks of every level.

Cookery class themes include: Chop, Dice & Slice, Thai Curry, Bouillabaisse, Perfect Steak, Pasta Master, American-Style Chilli and others.

The course price includes in each lesson: teaching, demonstration, cooking and eating, use of an apron, tools and a glass of wine (under 18's non alcoholic drink).

## Course Summary

Course Code	G26C
Available in	Brighton & London
Start Dates	Any Monday
Duration	2 weeks
Min. Level	Intermediate (B1)
Class Size	English: avg. 11, max. 14 Cooking: max. 16
Lessons/Week	26
Lesson Duration	English: 50 mins Cooking: 60 mins

## Course Summary

<b>Course Code</b>	G30W
<b>Available in</b>	Brighton
<b>Start Dates</b>	Any Monday Apr - Sep
<b>Duration</b>	2 weeks
<b>Min. Level</b>	Intermediate (B1)
<b>Class Size</b>	English: avg. 11, max 14 Watersports: one-to-one
<b>Lessons/Week</b>	30
<b>Lesson Duration</b>	English: 50 mins Windsurfing: 60 mins

## General English Plus Windsurfing

Those students who are passionate about watersports can now take advantage of Brighton's seaside location and combine morning English lessons with windsurfing in the afternoon.

### Course Contents

**09:15-12:05, Mon-Fri:** We work with a coursebook during the first three lessons of the day enabling you to improve the four main skills - speaking, listening, reading and writing. As well as these four main skills we will also work on other key areas to help develop your fluency and accuracy - pronunciation, grammar, vocabulary, idioms.

**12:25-13:15, Mon-Fri:** The final lesson of the course is devoted to Speaking & Listening, which is an extra opportunity for fluency practice.

**15:00-17:00, Mon-Fri:** Watersports lessons.



### BSC Online e-Learning Account

All students will have access to our online learning environment from the moment any of our courses are booked. In addition to giving you information about the school, the local area and social programme, the VLE also gives you access to English learning material and activities before you arrive in the UK, during your stay and for three months after you leave us. You will be able to monitor your English progress more easily and receive tailored advice and activities on how to build on and improve your own personal language strengths and weaknesses.

### Online Lessons

BSC is now pleased to be able to offer English lessons direct to your computer, TV, tablet or even mobile phone before you arrive in the UK and after you leave! Using the latest in video conferencing technology, we can provide one to one lessons or group lessons to help prepare you for your language vacation with us before you arrive and to maintain your English after you leave. We will also be able to offer lessons for specific purposes such as exam preparation (IELTS, FCE, CAE, TOEIC, TOEFL) or Business English.



## Work Experience and Career Services

We offer specialist programmes and advice for those wishing to further develop their career: internships and free job seeking guidance.

### Job Club

For students wishing to find part-time work during their studies, we hold a Job Club every second Friday in all our schools. We provide details of available jobs in cafés, bars, shops, hotels and promotions. All students receive a job pack with information on UK law, visas and the minimum wage. We also have a 'CV Clinic' where we give students free help and advice.

### Teacher Training

Our specialist Teacher Training centres in Oxford and Brighton offer a range of courses suitable for both UK and overseas teachers, whether just setting out on their teaching careers or wishing to extend their skills with on-going professional development. We offer the 4-week CELTA and Trinity CertTESOL courses, the 9-month DELTA and 2-week 'refresher' courses for non-native teachers. Please see our separate Teacher Training brochure for more information.

### Internships

For students wishing to gain work experience in a UK-based company and to improve their CV, we are able to offer internships in all centres. Placements can be arranged in the following sectors: marketing, hospitality, hotel & catering, media, events & administration. Placements are usually unpaid. In line with new UK regulations, eligibility depends on the candidate's current educational status. Some sectors are open to all candidates while others are only accessible to full time students in their country of residence (university studies or equivalent). Students must take a minimum 6-week English course before the placement.



British Study Centres  
School of English

# Thinking in English

[www.british-study.com](http://www.british-study.com)

## How to enrol

The final step: booking a place at one of our schools. Our staff in London, Oxford, Brighton & Bournemouth hope to see you soon!

If you decide to study at British Study Centres, please complete an application form and return it either directly to us or to an authorised British Study Centres agent in your country. We require a deposit of £250 for a course and accommodation.

Once we have received the application form and deposit, we will reserve your place and arrange your accommodation if requested. If you need a visa to study here, please apply as early as possible so that we can send all the documents you will need to make your application.

Once you are enrolled we will send you:

- Confirmation of your course.
- Details of your accommodation, including address, phone number and a map.
- An invoice for the balance of the fees, which must be paid before the first day of the course.
- A letter of registration, which you will need to secure a visa (visa nationals only). Take this document to your nearest British Consulate, High Commission or Embassy. Please allow plenty of time to obtain the visa.

When you arrive we can also arrange to meet you at the airport and take you to your accommodation – please see fee sheet for details.

We recommend that you take out personal travel insurance before you leave your country. Non-EU students should also take out medical insurance unless your country has a special arrangement with the UK.

CONTACT US AT:

All courses offered are subject to student numbers. While the information contained in this brochure is correct at the time of printing, British Study Centres reserves the right to amend course specifications as required